



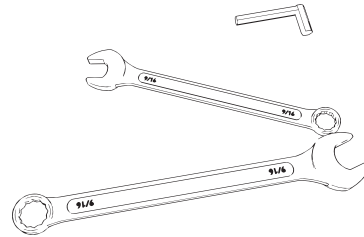
ARCO UMBRELLA

ASSEMBLING ISTRUCTION

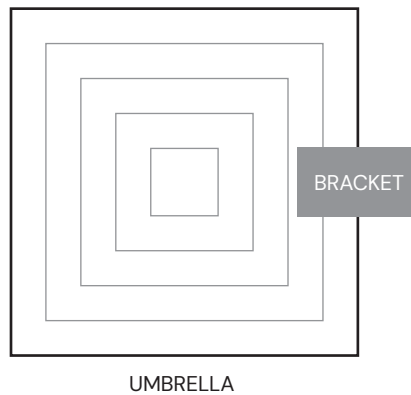
REQUIRED TOOLS

TIME: 30 minutes

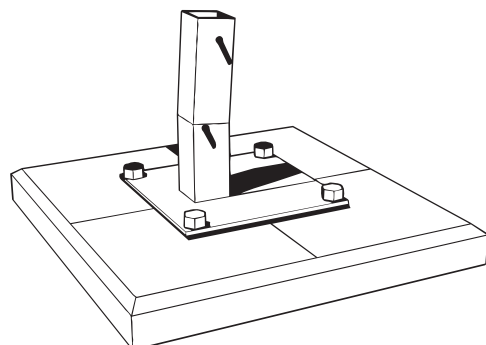
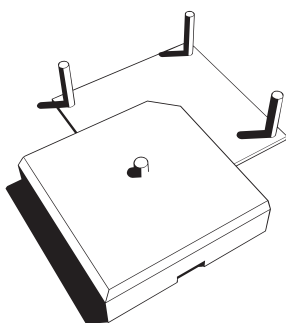
TOOLS: Allen Key 5mm,
13 mm Wrench,
28 mm Wrench



1. Position the steel plate with 4 screws on the desired spot. The center of the bracket is exactly under the center of the umbrellas' edge.

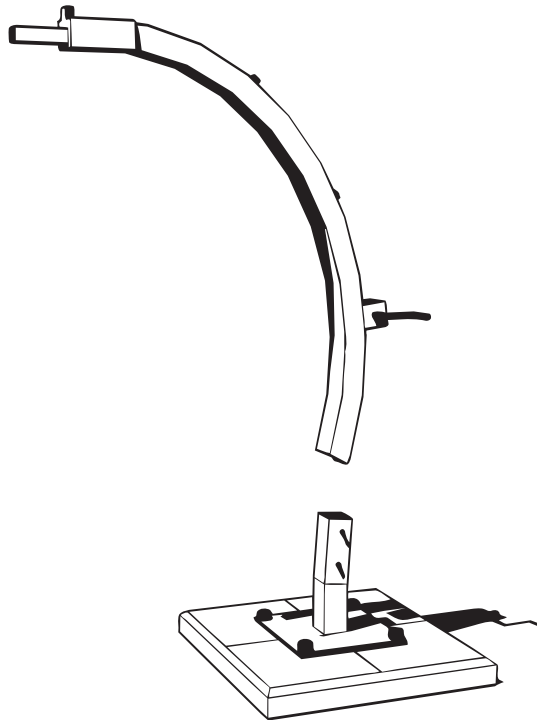


2. Insert the bases and connect the "foot" of the umbrella to the base using 28mm wrench.

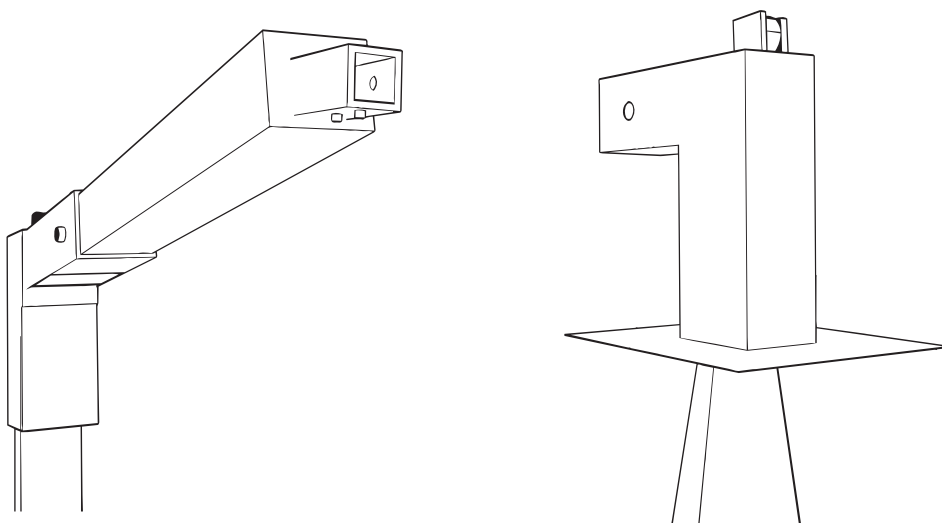




3. Insert the arch in the "foot" and tighten the allen keys on the foot.

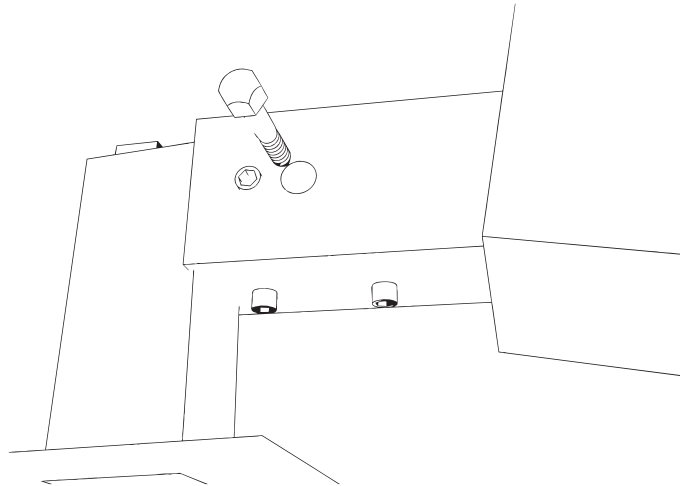


4. While holding the canopy vertical under the extremity of the horizontal pole, connect the canopy to the pole, removing first the security bolt at the end of the pole. Connect the umbrella using the male (umbrella) / female (pole) connection.

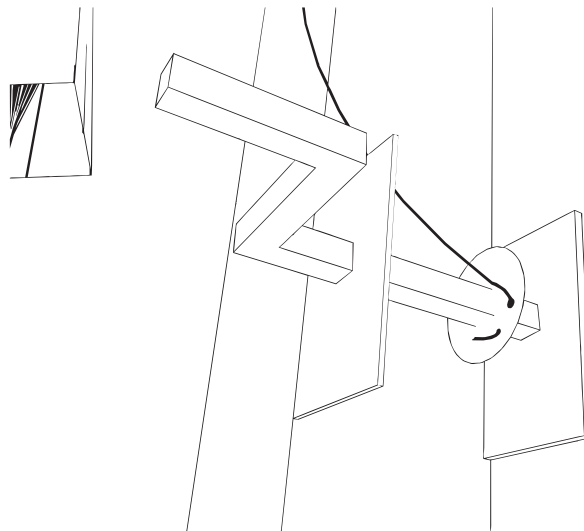




5. Re-insert the security bolt and screw it with 13mm wrench. Lock the bolts under the pole with allen key. These bolts can be used to regulate slightly the inclination of the canopy.



6. Connect the rope with the winch, passing by the wheels on the arch



7. Take off the protection covering. Untie the canopy and start opening it with hands for the first opening, to avoid the braking of the ribs due to transport conditions (they could have ended one under each other during transportation).